



MONTHLY MEMBERSHIP PROGRESS REPORT

District 5M 9

Results as of: 10/31/2018

GMT: MICHAEL MOLENDIA

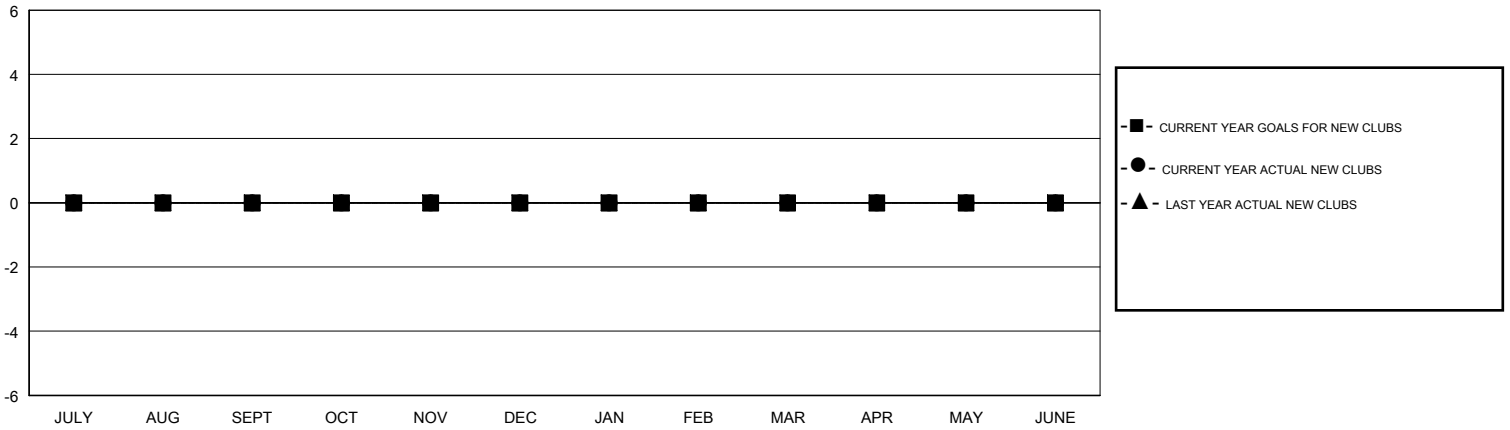
LOCATION MINNESOTA

GMT CA

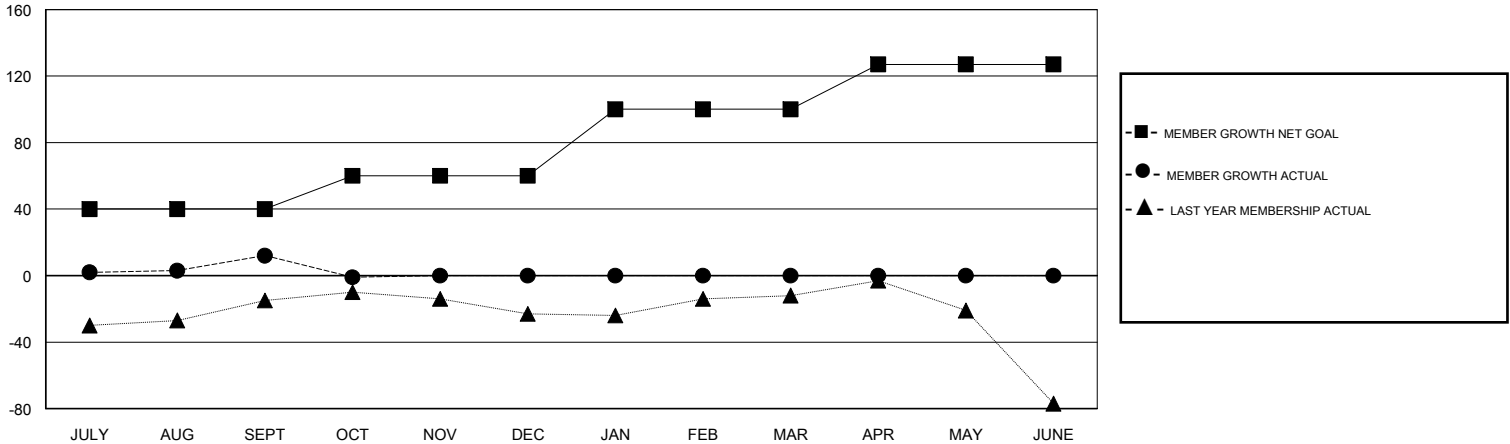
Clubs			
RESULTS FOR 2018-2019			
QUARTER	NEW CLUB GOAL	NEW CLUBS	DROPPED CLUBS
JULY/AUG/SEPT	0	0	0
OCT/NOV/DEC	0	0	0
JAN/FEB/MAR	0	0	0
APR/MAY/JUNE	0	0	0

Members			
RESULTS FOR 2018-2019			
QUARTER	MEMBER GROWTH NET GOAL	MEMBER GROWTH ACTUAL	DROPPED MEMBERS ACTUAL (including transfers)
JULY/AUG/SEPT	40	71	46
OCT/NOV/DEC	20	15	23
JAN/FEB/MAR	40	0	0
APR/MAY/JUNE	27	0	0

GOALS AND ACTUAL NEW CLUBS CUMULATIVE



GOALS AND ACTUAL MEMBERS CUMULATIVE



DROPPED CLUBS: 0

31 CLUBS OF 67 ADDED 1 OR MORE NEW MEMBERS

GENDER DISTRIBUTION	
MALE	1,388 (62.55%)
FEMALE	831 (37.45%)
Women Percentage Fiscal Year Goal: 0%	

DROPPED MEMBERS	
DECEASED	10
CLUB CANCELLED	0
OTHER	59
TOTAL	69

[CLICK HERE FOR CUMULATIVE MEMBERSHIP DATA](#)

TOTAL FAMILY UNIT MEMBERS	719
FAMILY MEMBERS PAYING HALF DUES	363